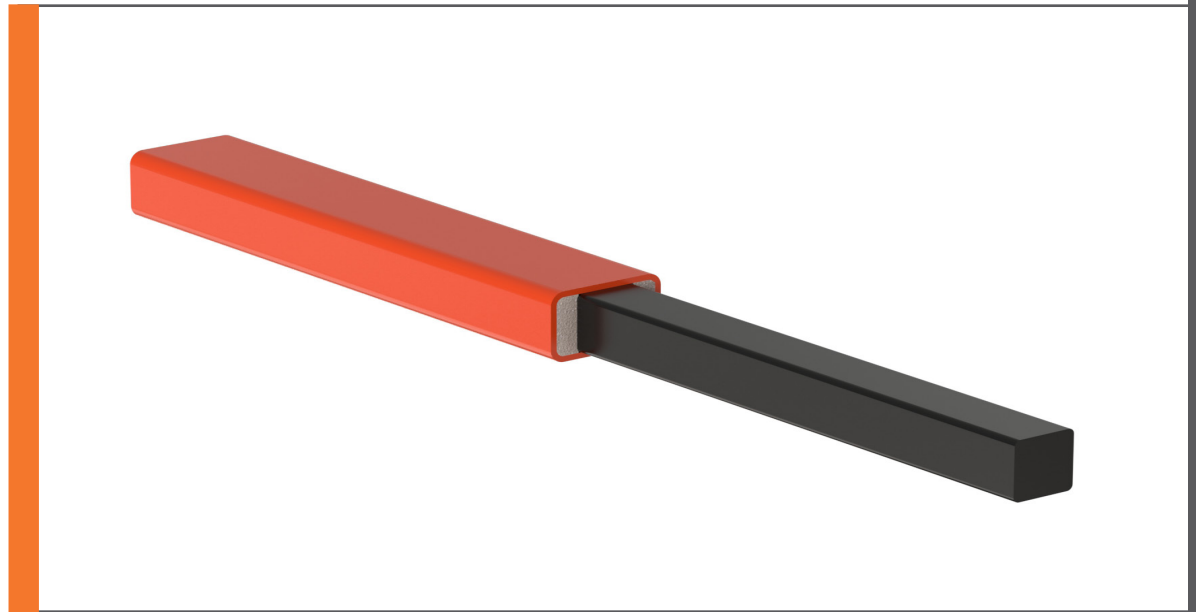


# SQUARE DOWEL AND SQUARE DOWEL CLIP™



## JOINT STABILITY FOR NEW AND NEW-TO-EXISTING CONCRETE FLATWORK



PNA's Square Dowel and Square Dowel Clip™ improve joint stability for reliable construction joints in new and new-to-existing concrete flatwork applications. When paired with the square dowel, the compressible foam inside of the Square Dowel Clip™ allows for joint activation and free horizontal movement of the concrete without restraint. When using this system in new concrete, our Square Dowel Aligners can be used to secure the dowels to wood formwork.

### ENGINEERED TO STABILIZE CONSTRUCTION JOINTS AND LENGTHEN THE SERVICE LIFE OF SLABS AND PAVEMENTS

- ▶ When compared to round dowels with a same on-center spacing, the geometry of our square dowels provides 27% more cross sectional area of steel at the joints where stresses are highest, resulting in a 70% higher resistance to bending.
- ▶ The Square Dowel Clip™ features compressible foam that keeps the Square Dowel in place during construction while also allowing for horizontal differential movement of the concrete after placement and minimizing the potential for cracking cause by restraint.
- ▶ Dowels are sawn full-depth and deburred per industry guidelines ensuring square, true, and smooth edges that will minimize restraint.

### SQUARE DOWEL SYSTEM MATERIAL DETAILS

- ▶ Ensure reliable quality and performance from consistent modulus of dowel support with dowels manufactured from steel certified to meet ASTM A36.
- ▶ For corrosion resistance, hot-dipped galvanized steel certified to meet ASTM A123/A 123M and ASTM A385 can be made-to-order.
- ▶ Reduces dowel looseness with the Square Dowel Clip™ piece, molded from high density ABS plastic possessing outstanding impact and mechanical strength ensuring its ability to maintain structural integrity under repetitive and/or heavy loads.

# SQUARE DOWEL AND SQUARE DOWEL CLIP™

## DESIGN RECOMMENDATIONS:

### Dowel Size (Thickness)

Dowel size (thickness) recommendations are equivalent for round and square dowels; for example, if a 1" round dowel bar was specified for a project, then a 1" square dowel is recommended. The table [wherever the length/ordering chart is located], based on the latest ACI guides, provides recommendations for square dowel size, length, and Square Dowel Clip™ length. The Square Dowel Clip™ length is sized such that any dowel that is installed within the specified tolerance will always have a clip length greater than the exposed half of an installed dowel.

### Dowel Spacing

Square dowels can be spaced 2 inches further apart than round dowels if the round dowel is specified at 12-15 inch spacing, and 3 inches further apart for 16-18 inch spacing.

## THE CLEAR CHOICE OVER ROUND DOWELS

- ▶ Ensures a consistent amount of steel at the joint where the bearing, shear, and flexural stresses are highest.
- ▶ Delivers load transfer using an increased bearing area of steel at the joints.
- ▶ Permits dowel placement to within 6 inches (150 mm) of the joint intersection, whereas a minimum of 12 inches (300 mm) distance is required for round dowels.
- ▶ Eliminate greasing/spinning dowels and removing and reinstalling dowels.

For more information on our square dowel design recommendations, please read our "Square Dowel Design Requirements" whitepaper.



## MANUFACTURED IN THE U.S.A.

With a plant on both coasts (Charlotte, NC and Bakersfield, CA) PNA is a short distance to your next jobsite.

## PNA SQUARE DOWEL AND SQUARE DOWEL CLIPS™ HELP YOU:

- Collect your retainage
- Reduce your callbacks and save labor
- Limit your liability
- Deliver cost-effective concrete flatwork

| Design Information                 |                         |                    |                                 |                      |                 | Ordering Information  |                               |
|------------------------------------|-------------------------|--------------------|---------------------------------|----------------------|-----------------|-----------------------|-------------------------------|
| Typical Slab Thickness Range (in.) | Square Dowel Size (in.) | Dowel Length (in.) | Square Dowel Clip™ Length (in.) | Embedment Multiplier | Embedment (in.) | Square Dowel Part No. | Square Dowel Aligner Part No. |
| ≤6                                 | ½                       | 9                  | 5.0                             | 8.0                  | 4.0             | SD500                 | DA500, DA750                  |
| 5 to 6                             | ¾                       | 10                 | 5.5                             | 6.0                  | 4.5             | SD750                 | DA750                         |
| 6 to 8                             | 1                       | 13                 | 7.0                             | 6.0                  | 6.0             | SD1000                | DA1000                        |
| ≥8                                 | 1¼                      | 15                 | 8.0                             | 5.6                  | 7.0             | SD1250                | –                             |

For price **quotes**, email inquiries to [csr@pna-inc.com](mailto:csr@pna-inc.com).

To place an **order**, email your purchase order (PO) to [orderspna@pna-inc.com](mailto:orderspna@pna-inc.com).

To speak with a Customer Service Representative, call 1 (800) 542-0214.

©2024. PNA Construction Technologies, Inc. All rights reserved. 10/24. Products are registered trademarks of PNA Construction Technologies, Inc. and may be covered by one or more U.S., international or pending patents. Visit [www.pna-inc.com](http://www.pna-inc.com) for the list of trademarks and patents.

PNA-4

