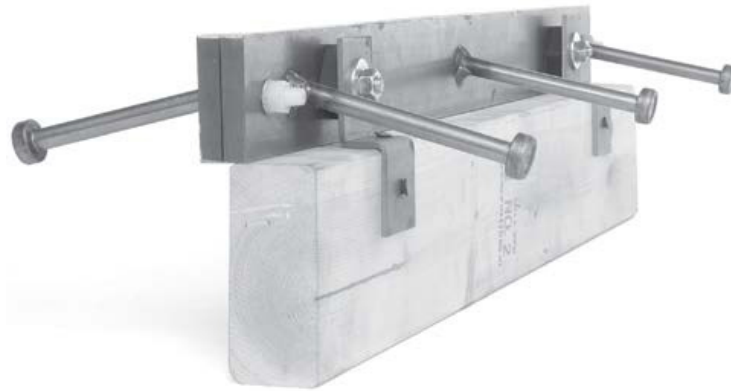


JOINT ASSEMBLY



SPALL-FREE CONSTRUCTION JOINTS

Armor-Edge® joint assembly is an engineered system that ensures smooth surface transitions with the square and true profile of cold-finished steel bars. And, you minimize the occurrence of out of joint cracking from restraint with an alignment assembly that yields as the construction joint activates. Accelerate construction schedules and eliminate the need for highly-skilled on-site labor by eliminating on-site custom fabrication, welding and grinding.

PERFORMANCE-BASED ENGINEERING

To minimize cracking, the alignment assembly bolt is designed to strip as the concrete shrinks and the joint activates freely. The edge of the concrete at the joint adjacent to the Armor-Edge® joint assembly is completely protected by the straight and true edges of the Grade 1018 coldfinished steel certified to meet ASTM A108. For corrosion resistance, the Armor-Edge® joint assembly can be hot-dipped galvanized or can be manufactured from stainless steel Grade 304L or Grade 316L.

MULTIPLE USES

This is the ideal edge protection solution for high-traffic areas, freezer buildings and floor designs where the construction joints are expected to open up more than 1/8" (3 mm), including:

- ▶ Shrinkage-compensating concrete
- ▶ Steel reinforcement in dosages >0.5 percent by cross-sectional area
- ▶ Post-tensioned concrete
- ▶ High Volume Synthetic Fibers (HVSF), >7.5 lb./yd.³

ARMOR-EDGE® JOINT ASSEMBLY DETAILS

The fully aligned assembly arrives on-site ready for immediate installation. Prefabricated crosses and T's tie directly into the joint assembly lengths. A flat surface to finish against delivered by the specialty steel of the joint assembly bars. Optional in-built ledge to support joint filler. Easy adjustment to the correct elevation using mounting brackets, takes and bolts.

ARMOR-EDGE®

JOINT ASSEMBLY

AVAILABLE IN THREE OPTIONS TO MEET YOUR NEEDS

Armor-Edge® joint assembly for new construction

- ▶ Simple installation on locally available wood bulkheads or the Diamond Dowel® bulkhead.
- ▶ Deliver consistent load transfer with the Diamond Dowel® System, which is sold separately.

Armor-Edge® All Steel joint assembly for new construction when consecutive placements are required

- ▶ Eliminates stripping with leave-in-place form.
- ▶ Includes a leave-in-place form embedded with the Diamond Dowel® System to deliver consistent load transfer.

Armor-Edge® n2e joint assembly for repairs and transitions from existing to new slabs

- ▶ Arrives with ten 3/4" x 10" (20 mm x 300 mm) square dowels for load transfer and ten 3/4" x 5.5" (20 mm x 175 mm) Square Dowel Clip™ pieces to secure foam on the sides of the square dowels to minimize restraint to horizontal slab movement due to concrete shrinkage
- ▶ The assembly can be easily bolted to the existing slab using five anchor bolts (that ship with the assembly), installed through holes cut in the side of the assembly extended specifically for this purpose



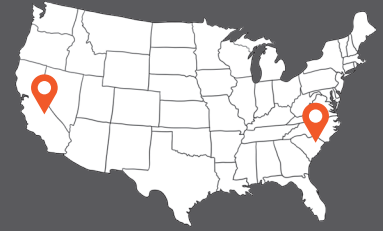
For price **quotes**, email inquires to csr@pna-inc.com.

To place an **order**, email your purchase order (PO) to orderspna@pna-inc.com.

To speak with a Customer Service Representative, call 1 (800) 542-0214.

©2023. PNA Construction Technologies, Inc. All rights reserved. 01/23. Products are registered trademarks of PNA Construction Technologies, Inc. and may be covered by one or more U.S., international or pending patents. Visit www.pna-inc.com for the list of trademarks and patents.

PNA-2



MANUFACTURED IN THE U.S.A.

With a plant on both coasts (Charlotte, NC and Bakersfield, CA) PNA is a short distance to your next jobsite.

THE ARMOR-EDGE® JOINT ASSEMBLY HELPS YOU:

- Reduce floor and truck maintenance costs
- Ensure smooth surface transitions
- Accelerate construction schedules
- Eliminate the need for highly-skilled on-site labor