

Armor-Edge® n2e Joint Assembly

Joint Protection for Transitions Between New and Existing Floors

Smooth transitions between slabs just got easier.

Armor-Edge® n2e joint assembly is a superior edge protection system for transitions from new to existing concrete slabs. Typically, it is used in expansions and repairs of freezer buildings, new door openings and other high-traffic areas to provide a smooth surface transition for forklift traffic.

Engineering Advantages

- Eliminates spalling for the life of the floor
- Bolts to an existing floor
- Improves surface tolerances and profile of the existing slab
- PNA Square Dowel Clips™ have foam sides to allow lateral movement and accommodate slab shrinkage without causing restraint
- Arrives at the job site fully aligned. The alignment assembly maintains bar position during shipping and installation.
- Cold-rolled steel provides a flat exposed surface edge to finish against

Cost Effective

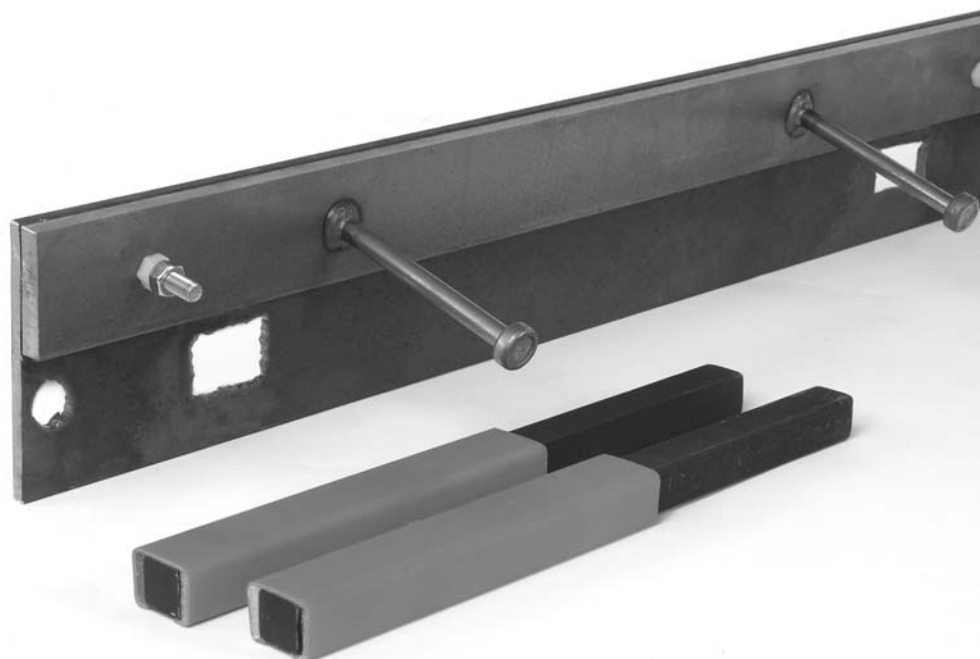
- Arrives on-site fully assembled and perfectly aligned
- Eliminates on-site welding or grinding with skilled labor

Ease of Installation

- Ships as a complete engineered system with seven 3/4" x 12" square dowels, seven 3/4" x 7" square dowel clips and five anchor bolts
- Eliminates form removal
- Cold-rolled steel provides a flat exposed surface edge to finish against

Where significant slab movement is expected, steel plating of the joint edges is recommended; for strengthening the edges.

— ACI 302.1R-04



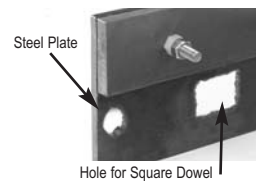
Instructions for Use

The standard length is 12 feet.

Step 1

Hold the Armor-Edge® n2e joint assembly's steel plate against the existing slab, ensuring the steel plate and bar are flush with the existing slab surface. Mark the locations of the holes for the square dowels and anchor bolts with spray paint.

Remove the Armor-Edge® n2e joint assembly.



Step 2

Drill holes for the square dowels using a **1 1/4" drill bit** and for the anchor bolts using a **1/2" drill bit**. Firmly attach the Armor-Edge® n2e joint assembly to the existing slab with the anchor bolts provided. Check the assembly for the correct line and elevation, and adjust if required.

Step 3

Epoxy grout the 3/4" X 12" square dowels provided into the pre-drilled holes. Allow epoxy to cure. Install square dowel clips with the plastic covering the top of the dowel and the side foam vertical to the faces of the bars. The plastic clip should extend the full length of the exposed dowel.

Step 4

Remove the steel shipping nut and washer.



Step 5

Place and finish the new slab using internal vibration to consolidate the concrete, per industry guidelines.

Step 6

Remove concrete paste from the top of the Armor-Edge® n2e joint assembly plate and bar during finishing.

Step 7

If the existing slab is uneven or out of level, then grind joint flush.

If this is not possible, saw-cut 1/2" deep, 18"-24" back into the existing slab; chip existing slab down 1/2"-3/4" and top with approved epoxy topping materials.

LOAD TRANSFER SYSTEMS

- DIAMOND DOWEL® SYSTEM
- PD³ BASKET™ ASSEMBLY
- LOAD PLATE BASKET™ ASSEMBLY

JOINT PROTECTION PRODUCTS

- ARMOR-EDGE® JOINT ASSEMBLY
- ARMOR-EDGE® N2E JOINT ASSEMBLY
- ARMOR-EDGE® ALL STEEL JOINT

CURING COVERS

- HYDRACURE™ S16 – SINGLE-USE
- HYDRACURE™ M5 – MULTI-USE

OTHER

- 1/2" SQUARE DOWEL BASKET
- BOLLARD BASE



800.542.0214

WWW.PNA-INC.COM

© 2007 PNA Construction Technologies, Inc.
All rights reserved. 01/07

Armor-Edge® is a registered trademark of PNA Construction Technologies, Inc. Products shown may be covered by one or more of U.S. patents #6,775,952, #6,354,760, #5618125 and other pending patents.